

**AUTOTECNICA IMPORTS PTY LTD**  
**48 NORTHGATE DRIVE**  
**THOMASTOWN 3074**  
**VICTORIA AUSTRALIA**  
**WWW.AUTOTECNICA.COM.AU**  
**TELEPHONE (03) 9464 2200**  
**FACSIMILE (03) 9464 1400**  
**A.C.N. 004 230 639**  
**ABN 24 847 451 725**



EXCLUSIVE DISTRIBUTORS OF:  
**MONZÀ**

**ADVENTURER**

EXCLUSIVE AUTOMOTIVE PRODUCTS

**PART NO 688VBC TO SUIT COMMODORE VB-VC & SOME EARLY VK SEAT ADAPTORS LEFT & RIGHT KIT.**

**PLEASE READ THE INSTRUCTION IN FULL BEFORE FITTING THE AUTOTECNICA SEAT/S TO THE ABOVE VEHICLES.**

SOME OF THE VB-VC VEHICLES AND EARLY VK, APPEAR TO HAVE DIFFERENT ORIGINAL SEAT SLIDERS FITTED. THE SUPPLIED ADAPTORS WILL ONLY SUIT VEHICLES WITH THE SAME ORIGINAL SLIDERS AS PHOTO "A". IF THE DRIVER-SIDE SLIDER IS WELDED TO THE SEAT THIS ITEM WILL NOT SUIT. SEE "PHOTO A"

**ASSEMBLY PARTS: SUITABLE FOR THE DRIVER OR PASSENGER SIDE." PHOTO B"**

**PHOTO "A"**



- ASSEMBLY PARTS**  
 4 X 10MM SPACERS  
 4 X 6MM SPACERS  
 7 X COUNTERSUNK BOLTS  
 1 X BOLTS 35MM LONG  
 8 X ASSORTED WASHERS  
 4X BOLTS  
 2 X CONVERSION PLATES

**PHOTO "B"**



**DRIVER-SIDE CONVERSION.**

- 1 - PARK THE VEHICLE IN A SUITABLE POSITION AND ENSURE THE HAND BRAKE IS ON.
- 2- REMOVE THE SEAT FROM THE VEHICLE AND PLACE IT UPSIDE DOWN IN A SUITABLE POSITION. ENSURE TO RETAIN THE ORIGINAL SEAT MOUNTING BOLTS, THEY WILL BE USED WHEN INSTALLING THE NEW SEAT. REMOVE THE SEAT SLIDER FROM THE SEAT BY UNBOLTING THE HOLDING NUTS OR BOLTS IN SOME SEATS.
- 3 – POSITION THE NEW SEAT IN AN UPSIDE-DOWN POSITION AND PLACE THE 4X10MM SPACERS ONTO THE SEAT IN THE SAME POSITION AS "PHOTO C".
- 4 PLACE THE CONVERSION PLATE WITH THE SQUARE SLOT "PHOTO B" TOWARDS THE REAR OF THE SEAT BASE THE SAME AS "PHOTO D GREEN DOT". FROM THE BOTTOM OF THE CONVERSION PLATE INSERT 2 OF THE COUNTERSUNK BOLTS (RED DOTS) AS THEY WILL BE USED WHEN ATTACHING THE ORIGINAL FRAME TO THE CONVERSION PLATES. SECURE THE FRONT CONVERSION PLATE WITH THE SUPPLIED COUNTERSUNK BOLTS. ATTACH THE REAR CONVERSION PLATE AS ABOVE. ENSURE THE 1 X COUNTERSUNK BOLT IS ALSO INSERTED FROM THE BOTTOM OF THE PLATE AS PER "PHOTO D". PLACE THE 3 X 6 MM SPACERS ONTO THE LOOSE COUNTERSUNK BOLTS. DO NOT WORRY ABOUT THE "PURPLE DOT BOLT" AT THIS STAGE.

**IT IS ADVISABLE TO USE SOME "LOCK-TIGHT" PRODUCTS TO ENSURE THE BOLTS WILL NOT COME LOOSE**

- 5 ATTACH THE ORIGINAL SLIDER ONTO THE CONVERSION PLATES "PHOTO E" NOTING THERE WILL BE SOME CAREFUL PLACING AND ADJUSTMENTS OF THE LOOSE COUNTERSUNK BOLTS" RED DOTS BOLTS" TO MATCH UP WITH THE ORIGINAL HOLES OF THE SLIDER. USE THE SUPPLIED NUTS AND WASHERS TO SECURE. **DO NOT TIGHTEN AT THIS STAGE.**

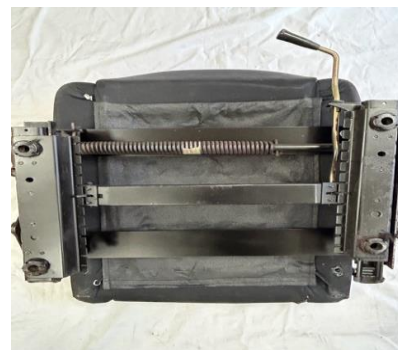
**PHOTO C**



**PHOTO D**



**PHOTO E**



4X 10MM SPACERS ON THE SEAT.

3X COUNTERSUNK BOLTS ON THE SEAT.

SLIDER ONTO THE SEAT.

6 ONCE THE ORIGINAL SLIDER IS IN THE CORRECT POSITION, SECURE THE 3 LOOSE BOLTS WITH THE SUPPLIED NUT "RED DOTS", "PHOTO F". NOTE TO POSITION THE NON-COUNTERSUNK BOLT "PURPLE DOT" FROM THE INNER OF THE SLIDER "PHOTO G". ONCE THE BOLT IS INSERTED INTO PLACE USE THE NUT AND WASHERS SUPPLIED TO SECURE. ENSURE THE 6MM SPACER IS ALSO PLACED BETWEEN THE CONVERSION PLATE AND THE SLIDER AND TIGHTEN THE ASSEMBLED CONVERSION.

**IT IS ADVISABLE TO USE SOME "LOCK-TIGHT" PRODUCTS TO ENSURE THE BOLTS WILL NOT COME LOOSE.**

PHOTO F

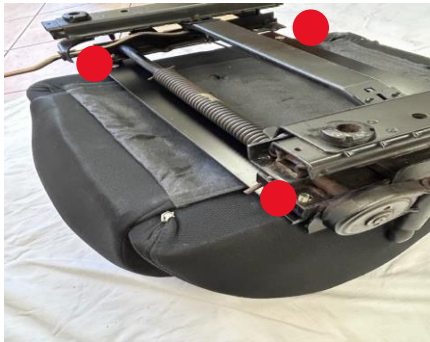
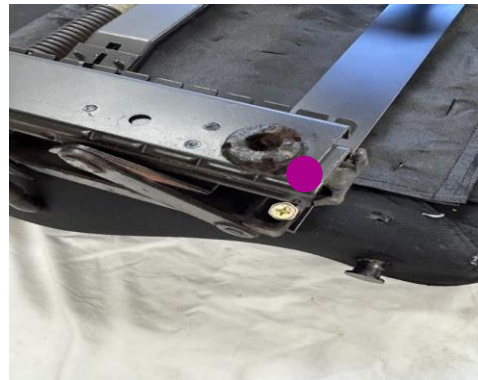


PHOTO G



REPEAT AS ABOVE FOR THE PASSENGER SIDE.

THE SEAT IS NOW READY TO BE FITTED INTO THE VEHICLE. USE THE ORIGINAL BOLTS REMOVED TO SECURE THE SEAT INTO THE VEHICLE..

**NOTE: THE AUTOTECNICA SEATS ARE ADR APPROVED; WE RECOMMEND HOWEVER THAT THE CONVERSION/S IS CHECKED BY AN ACCREDITED ENGINEER AFTER FITTING THE SEAT OR SEATS TO THE VEHICLE.**