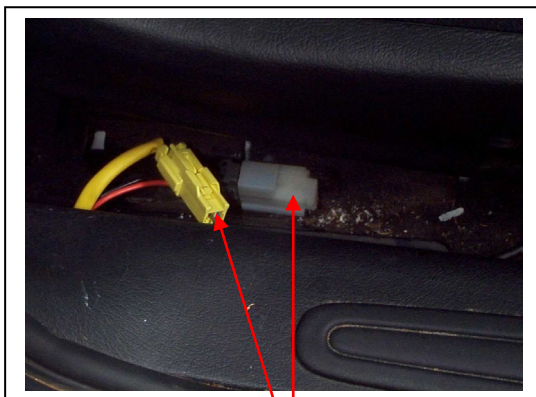


AUTOTECNICA FITTING INSTRUCTIONS
Monza/Autotecnica Seat Adaptor frame. Part No: 642VT/VX
VT to VX Series Holden Commodore

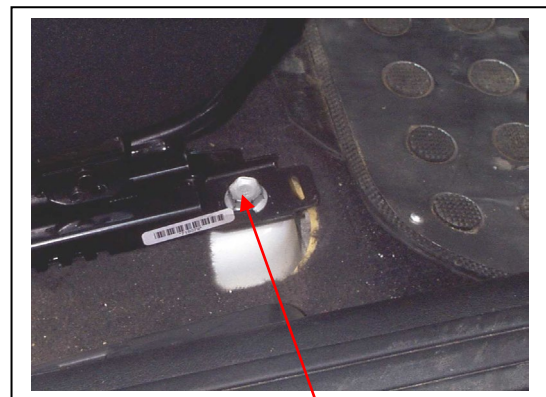


NOTE: The Autotecnica range of seats have been tested to the strength requirements of ADR 3/02. The installation of these seats in a motor vehicle requires certification by a qualified and registered Automotive Engineer. These adaptor frames have been designed by a Mechanical Engineer for use in the Holden VN to VS Commodore range of vehicles. If fitted in accordance with these instructions, the installation will pass an engineering inspection. It is the vehicle owners responsibility to have the installation certified and approved by the State registration authority.

1. Remove plastic 2 piece trim from outer seat slide.
 2. Disconnect 2 seat belt pre-tensioner plugs from next to seat slide
- NOTE:** Do not disconnect plugs with ignition switched to "ACC" or "ON" or with the engine running. Make sure key is removed BEFORE disconnecting plugs.
3. Remove complete seat assembly from vehicle by removing 4 bolts securing slide feet to floor.

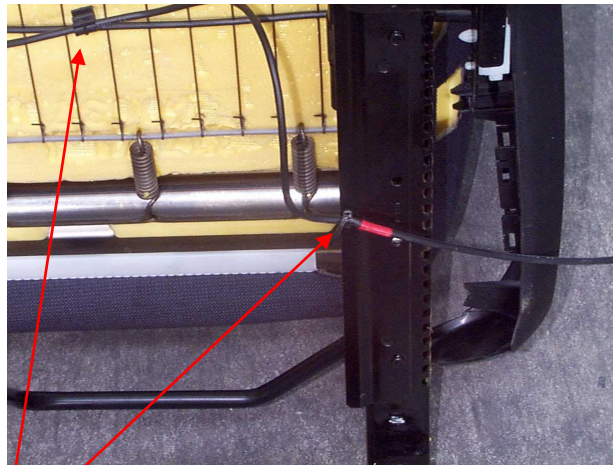


Disconnect plugs



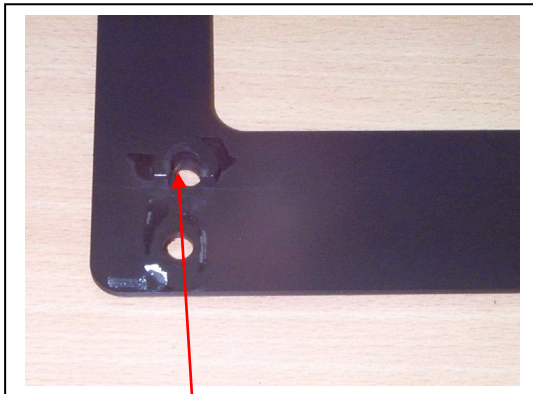
Remove bolts (4)

4. Place seat assembly up-side down on a flat surface.
5. Un-clip the electrical cable from the seat.

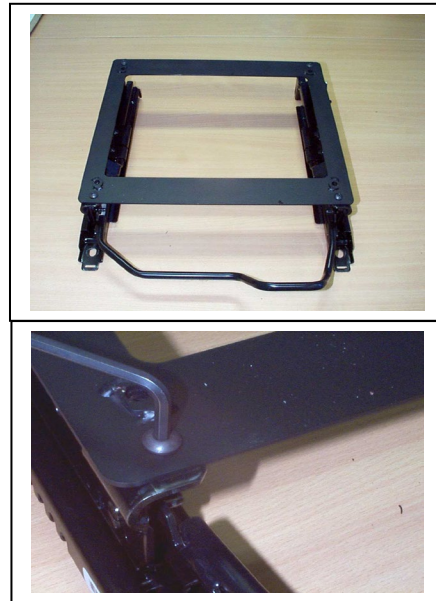


Unclip

6. Remove the 4 bolts securing the seat back to the frame assembly. Remove the 4 bolts securing the seat base to the slide assembly. This leaves the slides, adjuster bar, seat belt buckle and pre-tensioner as an assembly.
7. Place the Adaptor Frame over the seat slide assembly with the half spacers towards the slides. The slide bolt flanges should fit snugly between the half spacers with minimal clearance. Secure using the 4 x 20mm dome head cap screws supplied. Tighten to 43-55 Nm.



Half spacer



8. Place the Autotecnica seat upside down on a flat surface.
9. Invert the slide and adaptor assembly and place it on Autotecnica seat.
10. Secure using the 4 x 25mm head cap screws supplied. Tighten to 43-55 Nm. Reconnect the cable clips under the seat.
11. Re-install the Seat assembly to the vehicle and tighten the bolts to manufacturers specification.
12. Reconnect the electrical connectors and replace the side trim
13. Slide the seat through its full forward and full rearward positions to check operation of slide locks